



Three bedrooms

The Sandstone : Plot 13

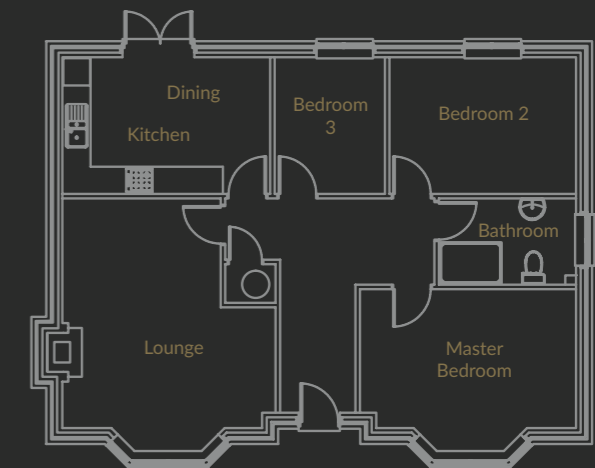
The Sandstone is a three bedroom detached bungalow with a unique, luxury design which is bespoke to The Beeches development. The design promotes a spacious layout; with your kitchen having French doors into the garden and a large lounge which is perfect for entertaining. The Sandstone has three bedrooms with a family bathroom and a single garage, all situated within a large plot.

Key Details

Ground Floor

- Lounge
- Kitchen / Dining
- Master Bedroom
- Bedroom 2
- Bedroom 3
- Bathroom
- Single Garage

Explore The Sandstone...



W x H

Lounge	5.43m x 4.70m (17' 9" x 15' 5")
Kitchen / Dining	4.58m x 3.01m (15' x 9' 10")
Master Bedroom	4.76m x 3.05m (15' 7" x 10')
Bedroom 2	4.11m x 3.01m (13' 8" x 9' 10")
Bedroom 3	2.43m x 3.01m (7' 11" x 9' 10")
Bathroom	3.02m x 1.90m (9' 10" x 6' 2")
Garage	2.60m x 5.30m (8' 6" x 17' 4")