

The Endson Plot 2



The Endson



Artist's impression

The Endson is a three bedroom semi-detached home with an open plan kitchen/dining room and a living room, which has a bay window to the front of the property. This property has the added benefit of a separate utility room with cloakroom beyond. French doors open out from the dining room onto the rear garden. There are three bedrooms on the first floor with the master bedroom having an en-suite shower room. This property has an integral garage.

Key Details & Measurements

Ground Floor

(W x L)

Hall
2.22m x 5.15m (7'3" x 16'11")

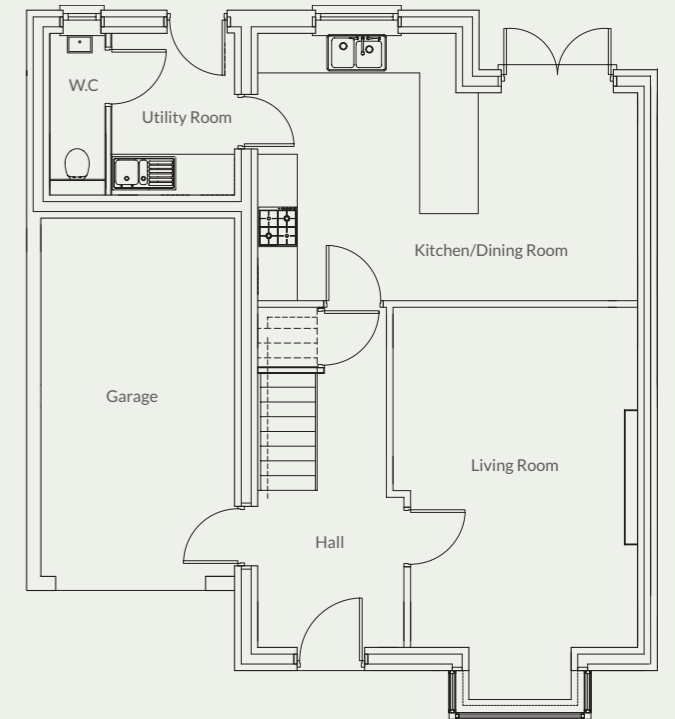
Living Room
3.70m (max) x 6.26m (max)
(12'2" x 20'6")

Kitchen/Dining Room
5.75m x 4.05m (18'10" x 13'3")

Utility
1.84m x 2.40m (6'0" x 7'10")

W.C
0.85 x 2.40m (2'9" x 7'10")

Integral Single Garage
2.80m x 5.29m (9'2" x 17'4")



First Floor

Master Bedroom
3.46m x 2.86m (not including entrance)
(11'4" x 9'4"(min))

Ensuite
1.72m x 2.03m (5'8" x 6'8")

Bedroom 2
3.10m x 3.32m (10'2" x 10'11")

Bedroom 3
2.37m x 2.47 (7'9" x 8'1")

Family Bathroom
2.19m x 2.66m (7'2" x 8'9")

