

The Haughton Plot 7



Artist's impression

The Haughton is a spacious modern family home. The property features an open plan kitchen and dining room with separate utility. The dining room has bifold doors which open out on to the patio area and garden. The family room offers another spacious reception room. The property also boasts a double garage. On the first floor there are four bedrooms, a family bathroom and an ensuite to the master bedroom.

Key Details & Measurements

Ground Floor

(W x L)

Hall

1.90m x 4.04m (6'3" x 13'3")

Kitchen/Dining Room

6.43m x 3.15m (21'1" x 10'4")

Utility

1.63m x 2.10m (5'4" x 6'10")

Living Room

3.17m x 5.50m (10'5" x 18'1")

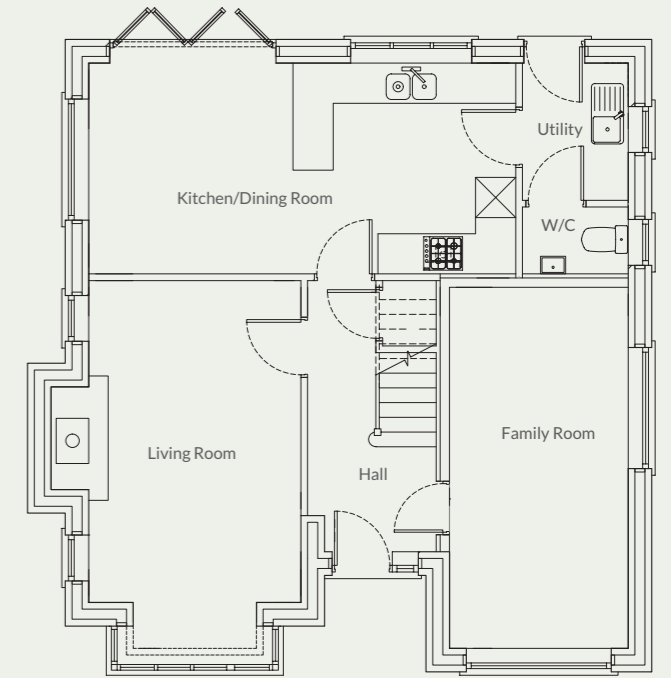
Family Room

2.67m x 5.39m (max) (8'10" x 17'8" (max))

W.C

1.63m x 1.00m (5'4" x 3'3")

Detached Double Garage



First Floor

Master Bedroom

4.13m x 4.42m (max) x (13'7" x 14'6" (max))

Ensuite

2.38m x 1.43m (7'10" x 4'8")

Bedroom 2

2.90m x 3.75m (9'6" x 12'4")

Bedroom 3

3.08m x 3.00m (10'1" x 10'0")

Bedroom 4

2.66m x 2.97m (8'9" x 9'10")

Family Bathroom

2.32m x 2.00m (7'7" x 6'7")

