

# The Hopton Plots 8 & 9



Artist's impression / Plot 9 shown - Plot 8 is a mirror image

The Hopton has the benefit of being a new, modern, five bedroom spacious family home but with the appearance of a cosy, stylish barn conversion. This is perfect for those who wish for generous size modern living in a countryside setting. There is a large kitchen and family room with French doors onto the patio and garden. The living room with feature fireplace and bifolding doors on to the patio can be accessed via the dining hall or the kitchen, creating a very sociable home. The snug, dining hall and living room are all individual rooms, giving flexible living space. All five bedrooms are double rooms and two have ensuite bathrooms. The master bedroom has dual aspect windows. Externally the prominent home has gardens surrounding the property, a double garage and a good size driveway for parking.

## Key Details & Measurements

### Ground Floor

(W x L)

#### Dining Hall

5.03m x 5.05 (16' 6" x 16' 7")

#### Snug

5.03m x 3.75 m (16' 6" x 12' 4")

#### Living Room

4.85m x 5.03m (15' 11" x 16' 6")

#### Kitchen/Family Room

5.03m x 7.48m (16' 6" x 24' 6")

#### Utility

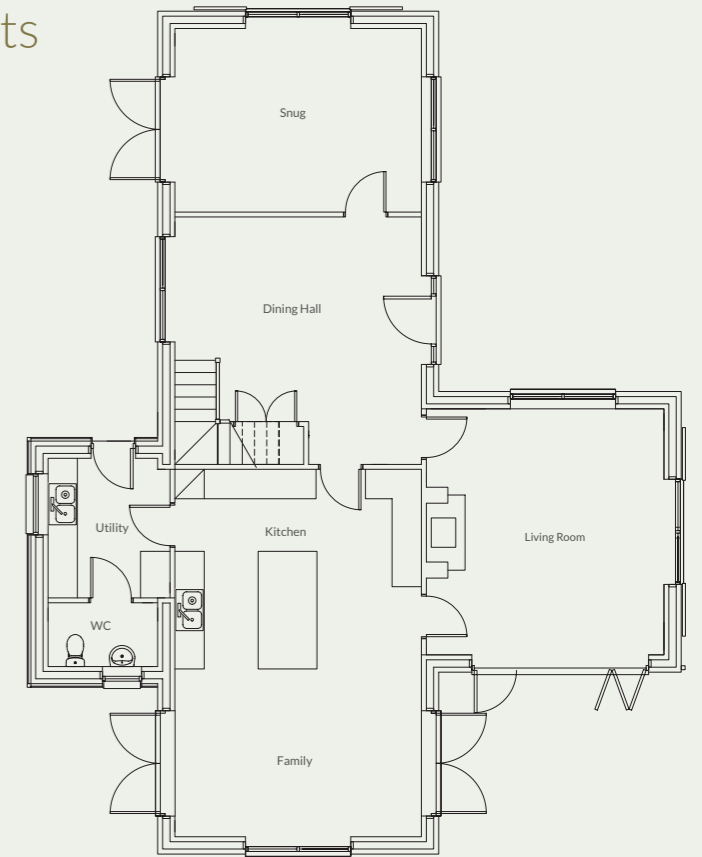
2.23m x 2.62m (7' 4" x 8' 7")

#### W C

2.23m x 1.30m (7' 4" x 4' 3")

#### Double Garage

5.25m x 5.55m (17' 3" x 18' 3")



### First Floor

#### Master Bedroom

4.85m x 4.41m (15' 11" x 14' 6")

#### Ensuite 1

1.80m x 3.27m (5' 11" x 10' 9")

#### Bedroom 2

3.93m x 3.75m (12' 11" x 12' 4")

#### Ensuite 2

1.10m x 2.90m (3' 7" x 9' 6")

#### Bedroom 3

2.83m x 4.15m (9' 3" x 13' 7")

#### Bedroom 4

3.75m x 2.90m (12' 3" x 9' 6")

#### Bedroom 5

3.08m x 3.25m (10' 11" x 10' 8")

#### Bathroom

2.10m x 2.96m (6' 11" x 9' 9")

