

# The Kinton Plot 3



The Kinton



Artist's impression

The Kinton is a three bedroom semi-detached home with an open plan kitchen/dining room and separate living room. French doors open onto the rear garden from the dining room. On the first floor, there is a master bedroom with ensuite, family bathroom and two further bedrooms.

## Key Details & Measurements

### Ground Floor

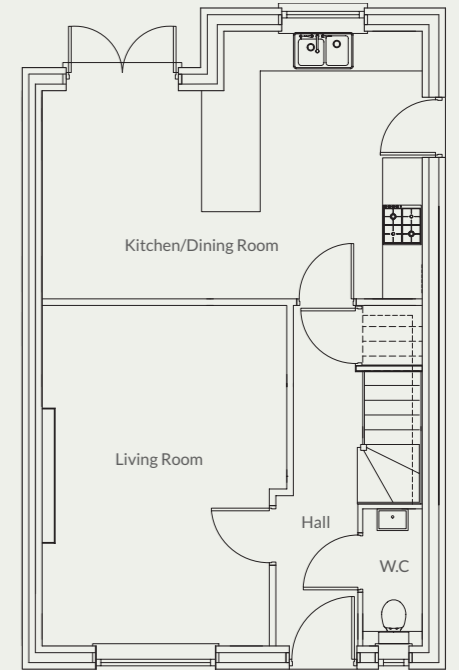
(W x L)

**Hall**  
2.22m x 5.15m (7'3" x 16'11")

**Living Room**  
3.70m (max) x 5.15m (12'2" x 15'9")

**Kitchen/Dining Room**  
5.75m x 4.05m (18'10" x 13'3")

**W.C**  
0.90m x 2.07m (2'11" x 6'9")



### First Floor

**Master Bedroom**  
3.46m x 2.86m (not including entrance)  
(11'4" x 9'4")

**Ensuite**  
1.72m x 2.03m (5'8" x 6'8")

**Bedroom 2**  
3.10m x 3.32m (10'2" x 10'11")

**Bedroom 3**  
2.37m x 2.47 (7'9" x 8'1")

**Family Bathroom**  
2.19m x 2.66m (7'2" x 8'9")

