

The Montford Plots 4 & 15



Plot 4



Plot 15



Plots 15 & 16 / Artist's impression

The Montford is a three bedroom, two bathroom, semi-detached house with an open plan kitchen/dining room and separate living room. French doors open onto the rear garden from the dining room. On the first floor there are three bedrooms. The master bedroom has an ensuite shower room.

Key Details & Measurements

Ground Floor

(W x L)

Hall

1.24m x 5.14m (4'1" x 16'10")

Living Room

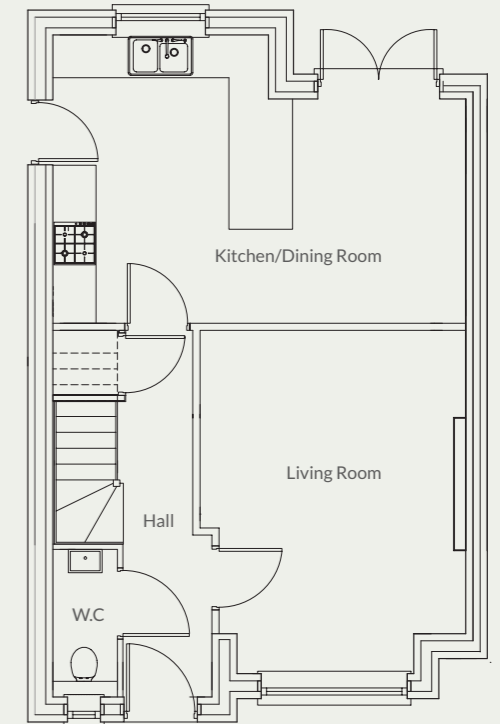
3.70m x 5.02m (max) (12'2" x 16'6" (max))

Kitchen/Dining Room

5.75m x 4.05m (18'10" x 13'3")

W.C

0.90m x 2.07m (2'11" x 6'9")



First Floor

Master Bedroom

3.46m x 2.86m (without entrance)
(11'4" x 9'5")

Ensuite

1.71m x 1.68m (5'7" x 5'6")

Bedroom 2

3.44m x 2.78m (11'3" x 9'1")

Bedroom 3

2.22m x 2.47m (7'3" x 8'1")

Family Bathroom

2.19m x 2.58m (7'2" x 8'6")

