

The Rednal Plots 5 & 16



Plot 5

Plot 16



Plots 4 & 5 / Artist's impression

The Rednal offers a modern kitchen/dining area and a living room on the ground floor with the added benefit of a utility room and integral garage. On the first floor the master bedroom has an ensuite bathroom and two further bedrooms.

Key Details & Measurements

Ground Floor

(W x L)

Hall
2.20m (max) x 5.14m (7'3" x 16'10")

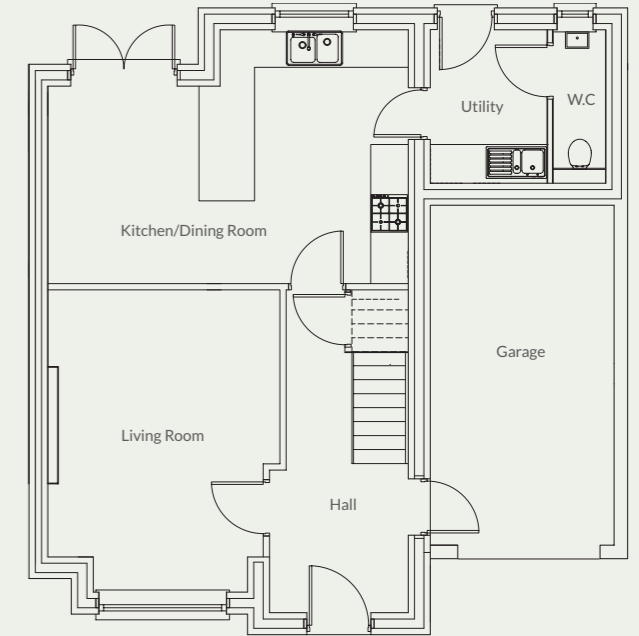
Living Room
3.70m x 5.02m (max) (12'2" x 16'6" (max))

Kitchen/Dining Room
5.75m x 4.05m (18'10" x 13'3")

Utility
1.86 m x 2.45m (6'1" x 8'0")

WC
0.85m x 2.45m (2'9" x 8'0")

Integral Single Garage
2.80m x 5.29m (9'2" x 17'4")



First Floor

Master Bedroom
3.46m x 2.86m (without entrance)
(11'4" x 9'5")

Ensuite
1.71m x 1.68m (5'7" x 5'6")

Bedroom 2
3.44m x 2.78m (11'3" x 9'1")

Bedroom 3
2.22m x 2.47m (7'3" x 8'1")

Family Bathroom
2.19m x 2.58m (7'2" x 8'6")

