

The Sandford Plot 6



Artist's impression

This family home has an open plan kitchen, dining room with bifold doors leading onto the rear garden. There is a separate utility and cloakroom and integral single garage. The Sandford, offers a good size living room to the front with a bay window and a fireplace. The master bedroom on the first floor also benefits from the feature bay window and an ensuite.

Key Details & Measurements

Ground Floor

(W x L)

Hall

1.98m (max) x 4.22m (6'6" x 13'10")

Living Room

3.17m x 5.50m (max) x 10'5" x 18'05" (max)

Kitchen/Dining Room

6.43m x 3.15m (21'1" x 10'4")

Utility

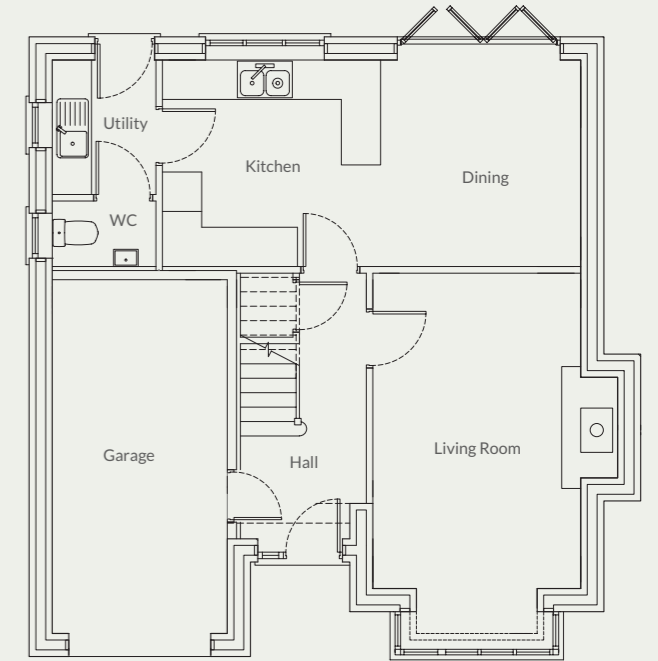
1.63m x 2.10m (5'4" x 6'10")

W.C

1.60m x 1.00m (5'3" x 3'3")

Integral Single Garage

2.67m x 5.40m (8'10" x 17'9")



First Floor

Master Bedroom

4.02m x 4.42m (13'2" x 13'1")

Ensuite

2.38m x 1.43m (7'9" x 4'8")

Bedroom 2

2.78m x 3.75m (9'1" x 12'3")

Bedroom 3

3.08m x 3.00m (10'1" x 9'10")

Bedroom 4

2.66m x 2.97m (8'9" x 9'9")

Family Bathroom

2.32m x 1.95m (7'7" x 6'5")

