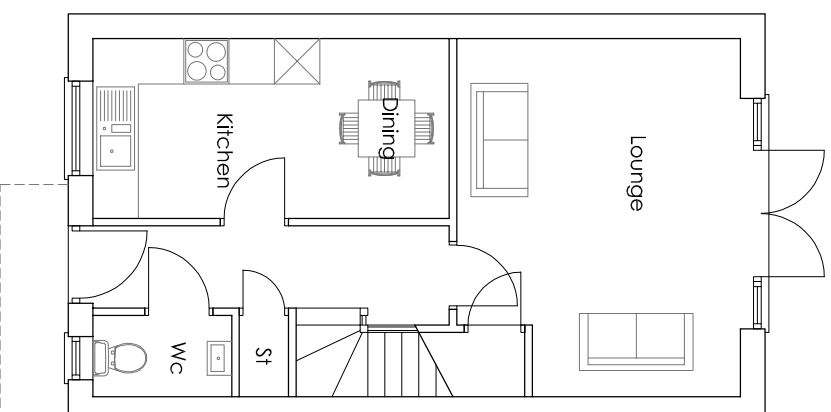
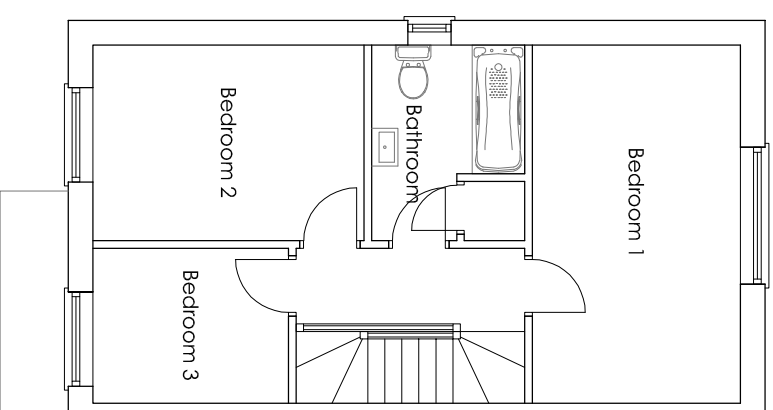


PLOT 31, 30(h)
HTG - HINDFORD

| | |
|------------------|---------------------------|
| Hall | 4.7m x 1.3m |
| Lounge | 4.73m (max) x 3.75m (max) |
| Kitchen / Dining | 4.7m x 2.37m |
| WC | 1.83m x 1.07m |
| Landing | 3.02m x 1.05m |
| Bedroom 1 | 4.73m x 2.75m |
| Bedroom 2 | 3.58m x 2.58m |
| Bedroom 3 | 2.58m x 2.02m(max) |
| Bathroom | 2.58m (max) x 2.07m |



Ground Floor Plan



First Floor Plan