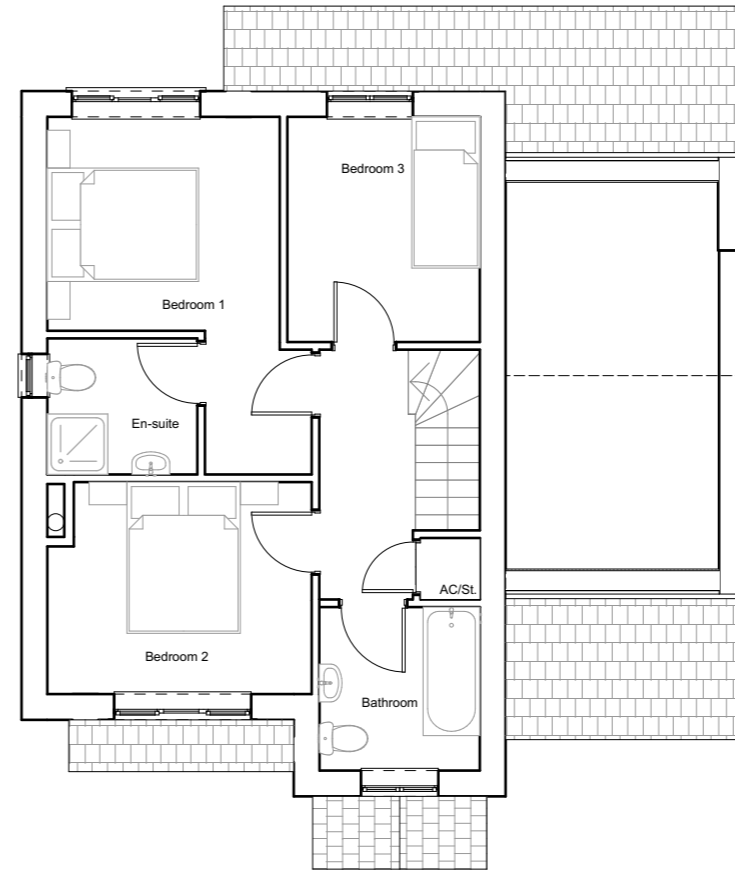


Ground Floor Plan
1:100 @ A3

Plot 2.14 & 29 - The Merrington
Plot 30 (Handed)

Ground Floor Room Sizes

Hallway	L: 5.56m (max) x W: 2.12m (max)
W.C	L: 2.32m x W:0.87m
Kitchen/ Dining	L: 3.85m (max) x W: 5.72m (max)
Utility	L: 1.62m x W: 2.55m
Living Room	L: 5.12m (max) x W: 3.47m
Garage	L: 5.99m x W: 2.82m

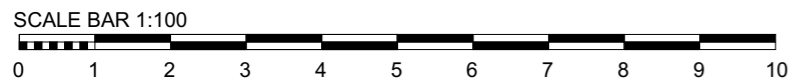


First Floor Plan
1:100 @ A3

Plot 2.14 & 29 - The Merrington
Plot 30 (Handed)

First Floor Room Sizes

Landing	L: 3.30m (max) x W:1.27m (max)
Store/ AC	L: 0.80m x W:0.75m
Bedroom 1	L: 4.03m (max) x W:3.07m (max)
En-Suite	L: 1.80m x W: 1.98m
Bedroom 2	L: 2.80m (max) x W: 3.50m (max)
Bedroom 3	L: 2.98m x W: 2.54m
Bathroom	L: 2.16m (max) x W: 2.12m



Purpose of Issue	status	Scales @ A3	Project No.	Originator	Project	Client	Layout Title	Drawing Number							
Sales/ Marketing Plan		1:100	STAT02	SHINGLER GROUP	Station Road Development Station Road Baschurch	Shingler Homes	The Merrington	project	originator	volume	level	type	role	number	rev
								STAT-	AT					STAT02 S-002	
								02							